

ATHINA/ELEFTHERIOS VENIZELOS

RWY 03R

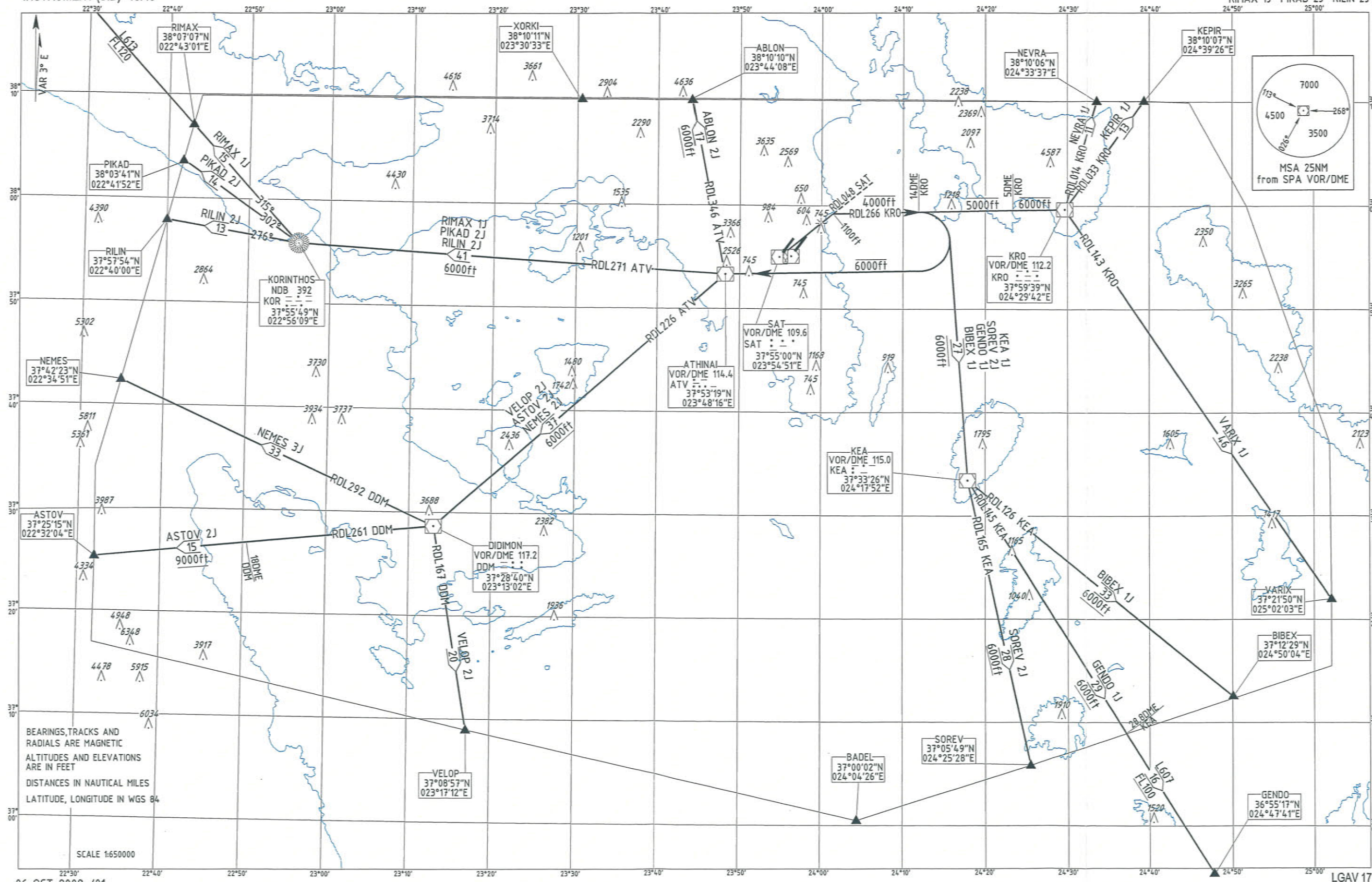
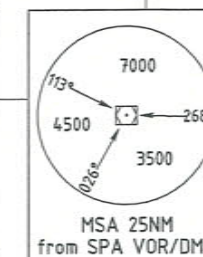
NEVRA 1J KEPIR 1J VARIX 1J  
KEA 1J BIBEX 1J GENDO 1J SOREV 2J  
ABLON 2J NEMES 3J ASTOV 2J VELOP 2J  
RIMAX 1J PIKAD 2J RILIN 2J

STANDARD DEPARTURE CHART -  
INSTRUMENT (SID) - ICAO

TRANSITION ALTITUDE  
9000ft

ATIS 136.125

TWR 136.275 118.625  
APP 128.950  
ACC 134.150 125.200 134.325 133.725



06 OCT 2009 /01

LGAV 17



## ATHINAI / ELEFThERIOS VENIZELOS AIRPORT

### SIDs RWY 03R

#### SAT VOR/DME - ATV VOR/DME

NEVRA 1J, KEPIR 1J, VARIX 1J, KEA 1J, BIBEX 1J, GENDO 1J, SOREV 2J, VELOP 2J, ASTOV 2J, NEMES 3J, RILIN 2J, PIKAD 2J, RIMAX 1J, ABLON2J.

#### GENERAL

1. IAS 210 KT. MAX and bank angle 15 deg for initial turns.
2. PDG: 5% (304 ft/NM) is required up to 1100 ft (QNH) for obstacle clearance purposes [Radar Antenna Tower at 745 ft (227m) located 1400 m to the east of RWY 21L THR] and then up to 6000 ft (QNH) for ATC purposes.
3. Restrictions in climb to a maximum altitude are applied in case of Radar failure, RCF, and if not otherwise instructed by ATC, in order to obtain vertical separation with simultaneous departure from the other parallel RWY 03L.
4. Initial clearance limit 6000 ft (QNH).

#### NEVRA 1J

Climb on RADIAL 048 SAT to 1100 ft (QNH). At 1100 ft (QNH) turn right, intercept and follow RADIAL 266 KRO to RADIAL 266 KRO / 5 DME fix not above 5000 ft (QNH), then proceed to KRO VOR not above 6000 ft (QNH). At KRO VOR turn left, intercept and follow RADIAL 014 KRO to NEVRA at 9000 ft (QNH) or above and as directed by ATC. *See Note 1.*

#### KEPIR 1J

Climb on RADIAL 048 SAT to 1100 ft (QNH). At 1100 ft (QNH) turn right, intercept and follow RADIAL 266 KRO to RADIAL 266 KRO / 5 DME fix not above 5000 ft (QNH), then proceed to KRO VOR not above 6000 ft (QNH). At KRO VOR turn left, intercept and follow RADIAL 033 KRO to KEPIR at 9000 ft (QNH) or above and as directed by ATC. *See Note 1.*

#### VARIX 1J

Climb on RADIAL 048 SAT to 1100 ft (QNH). At 1100 ft (QNH) turn right, intercept and follow RADIAL 266 KRO to RADIAL 266 KRO / 5 DME fix not above 5000 ft (QNH), then proceed to KRO VOR not above 6000 ft (QNH). At KRO VOR turn right, intercept and follow RADIAL 143 KRO to VARIX at 9000 ft (QNH) or above and as directed by ATC. *See Note 1.*

#### KEA 1J

Climb on RADIAL 048 SAT to 1100 ft (QNH). At 1100 ft (QNH) turn right, intercept and follow RADIAL 266 KRO climbing to 4000ft (QNH). Maintain 4000ft (QNH) until passing 14 DME KRO. At RADIAL 266 KRO / 14 DME Fix turn right and proceed to KEA VOR climbing to 6000ft (QNH) and then as directed by ATC. *See Note 1.*

#### BIBEX 1J

Climb on RADIAL 048 SAT to 1100 ft (QNH). At 1100 ft (QNH) turn right, intercept and follow RADIAL 266 KRO climbing to 4000ft (QNH). Maintain 4000ft (QNH) until passing 14 DME KRO. At RADIAL 266 KRO / 14 DME Fix turn right to KEA VOR climbing to 6000ft (QNH), then intercept and follow RADIAL 126 KEA to BIBEX. *See Note 1 & 2.*

#### GENDO 1J

Climb on RADIAL 048 SAT to 1100 ft (QNH). At 1100 ft (QNH) turn right, intercept and follow RADIAL 266 KRO climbing to 4000ft (QNH). Maintain 4000ft (QNH) until passing 14 DME KRO. At RADIAL 266 KRO / 14 DME Fix turn right and proceed to KEA VOR climbing to 6000ft (QNH) then intercept and follow RADIAL 145 KEA to GENDO. Arrange to pass RADIAL 145 KEA / 28.8 DME Fix at FL 100 or above. *See Note 1.*

#### SOREV 2J

Climb on RADIAL 048 SAT to 1100 ft (QNH). At 1100 ft (QNH) turn right, intercept and follow RADIAL 266 KRO climbing to 4000 ft (QNH). Maintain 4000 ft (QNH) until passing 14 DME KRO. At RADIAL 266 KRO / 14 DME fix turn right to KEA VOR climbing to 6000 ft (QNH), then intercept and follow RADIAL 165 KEA to SOREV at 9000 ft (QNH) or above. *See Note 1.*

#### VELOP 2J

Climb on RADIAL 048 SAT to 1100 ft (QNH). At 1100 ft (QNH) turn right, intercept and follow RADIAL 266 KRO climbing to 4000 ft (QNH). Maintain 4000 ft (QNH) until passing 14 DME KRO. At RADIAL 266 KRO / 14 DME fix turn right to ATV VOR climbing to 6000 ft (QNH).

At ATV VOR turn left, intercept and follow RADIAL 226 ATV to DDM VOR, turn left, intercept and follow RADIAL 167 DDM to VELOP at 9000 ft (QNH) or above and as directed by ATC. *See Note 1.*

#### ASTOV 2J

Climb on RADIAL 048 SAT to 1100 ft (QNH). At 1100 ft (QNH) turn right, intercept and follow RADIAL 266 KRO climbing to 4000 ft (QNH). Maintain 4000 ft (QNH) until passing 14 DME KRO. At RADIAL 266 KRO / 14 DME fix turn right to ATV VOR climbing to 6000 ft (QNH).

At ATV VOR turn left, intercept and follow RADIAL 226 ATV to DDM VOR, turn right, intercept and follow RADIAL 261 DDM to ASTOV at FL100 or above and as directed by ATC. Arrange to be 9000 ft or above by RADIAL 261 DDM / 18 DME fix. *See Note 1.*

#### NEMES 3J

Climb on RADIAL 048 SAT to 1100 ft (QNH). At 1100 ft (QNH) turn right, intercept and follow RADIAL 266 KRO climbing to 4000 ft (QNH). Maintain 4000 ft (QNH) until passing 14 DME KRO. At RADIAL 266 KRO / 14 DME fix turn right to ATV VOR climbing to 6000 ft (QNH).

At ATV VOR turn left, intercept and follow RADIAL 226 ATV to DDM VOR, turn right, intercept and follow RADIAL 292 DDM to NEMES at FL100 or above and as directed by ATC. *See Note 1.*

#### RILIN 2J

Climb on RADIAL 048 SAT to 1100 ft (QNH). At 1100 ft (QNH) turn right, intercept and follow RADIAL 266 KRO climbing to 4000 ft (QNH). Maintain 4000 ft (QNH) until passing 14 DME KRO. At RADIAL 266 KRO / 14 DME fix turn right to ATV VOR climbing to 6000 ft (QNH).

After ATV VOR intercept and follow RADIAL 271 ATV to KOR NDB, then intercept and follow BEARING 276 KOR to RILIN at FL100 or above and as directed by ATC. *See Note 1.*

#### PIKAD 2J

Climb on RADIAL 048 SAT to 1100 ft (QNH). At 1100 ft (QNH) turn right, intercept and follow RADIAL 266 KRO climbing to 4000 ft (QNH). Maintain 4000 ft (QNH) until passing 14 DME KRO. At RADIAL 266 KRO / 14 DME fix turn right to ATV VOR climbing to 6000 ft (QNH).

After ATV VOR intercept and follow RADIAL 271 ATV to KOR NDB, then intercept and follow BEARING 302 KOR to PIKAD at FL100 or above and as directed by ATC. *See Note 1.*

#### RIMAX 1J

Climb on RADIAL 048 SAT to 1100 ft (QNH). At 1100 ft (QNH) turn right, intercept and follow RADIAL 266 KRO climbing to 4000ft (QNH). Maintain 4000ft (QNH) until passing 14 DME KRO. At RADIAL 266 KRO / 14 DME Fix turn right to ATV VOR climbing to 6000ft (QNH). After ATV VOR intercept and follow RADIAL 271 ATV to KOR NDB, then turn right, intercept and follow BEARING 315 KOR to RIMAX at FL120 or above to join AWY L613.

*See Note 1.*

#### ABLON 2J

Climb on RADIAL 048 SAT to 1100 ft (QNH). At 1100 ft (QNH) turn right, intercept and follow RADIAL 266 KRO climbing to 4000 ft (QNH). Maintain 4000 ft (QNH) until passing 14 DME KRO. At RADIAL 266 KRO / 14 DME fix turn right to ATV VOR climbing to 6000 ft (QNH).

After ATV VOR turn right, intercept and follow RADIAL 346ATV to ABLON at FL100 or above and as directed by ATC. *See Note 1.*

*Note 1:* Do not climb above 4000 ft (QNH) until reaching 14 DME / KRO unless cleared by ATC.

*Note 2:* This SID should be used for destination PAROS Airport (LGPR).